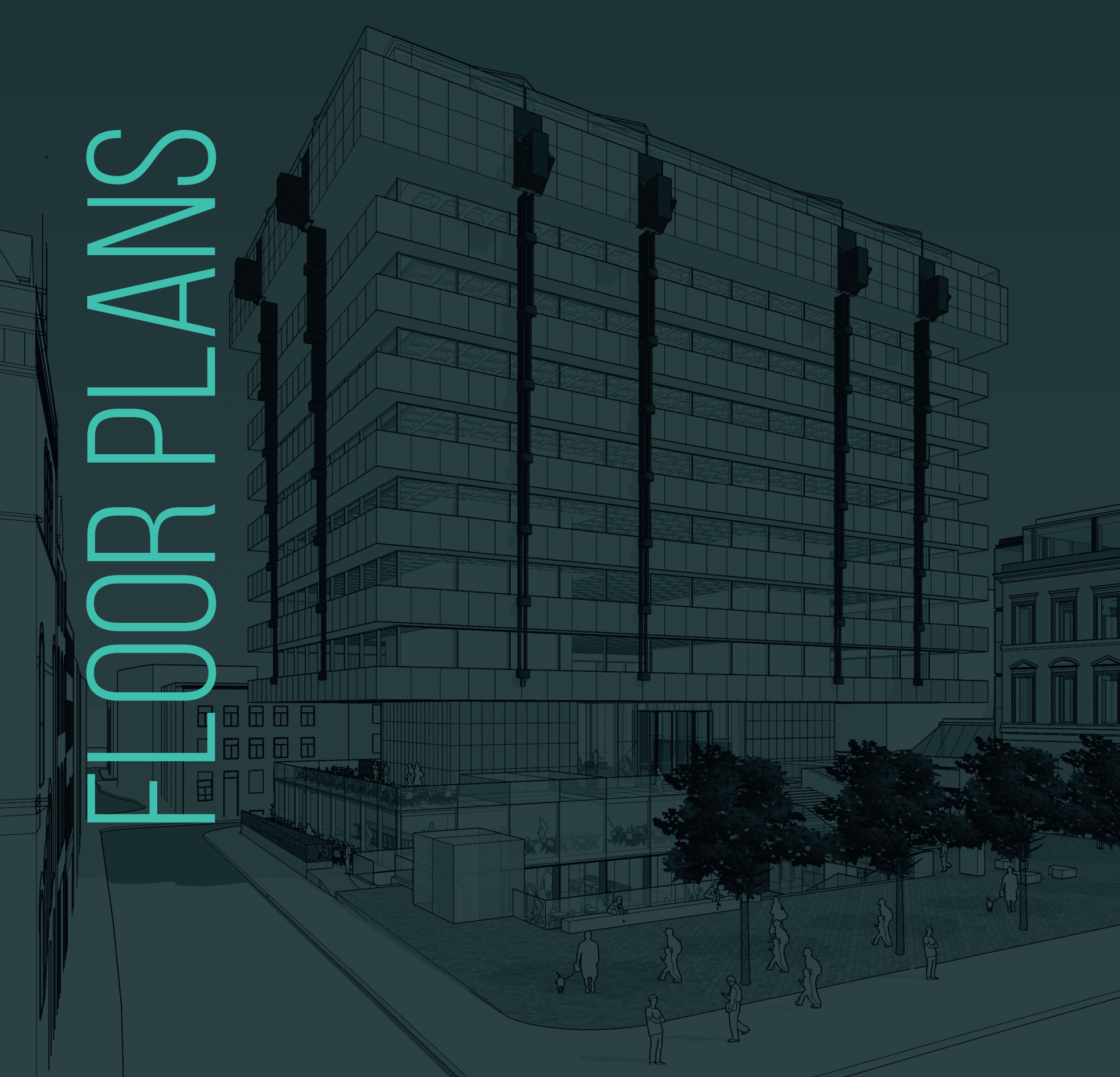


# FLOOR PLANS



# SCHEDULE OF AREAS

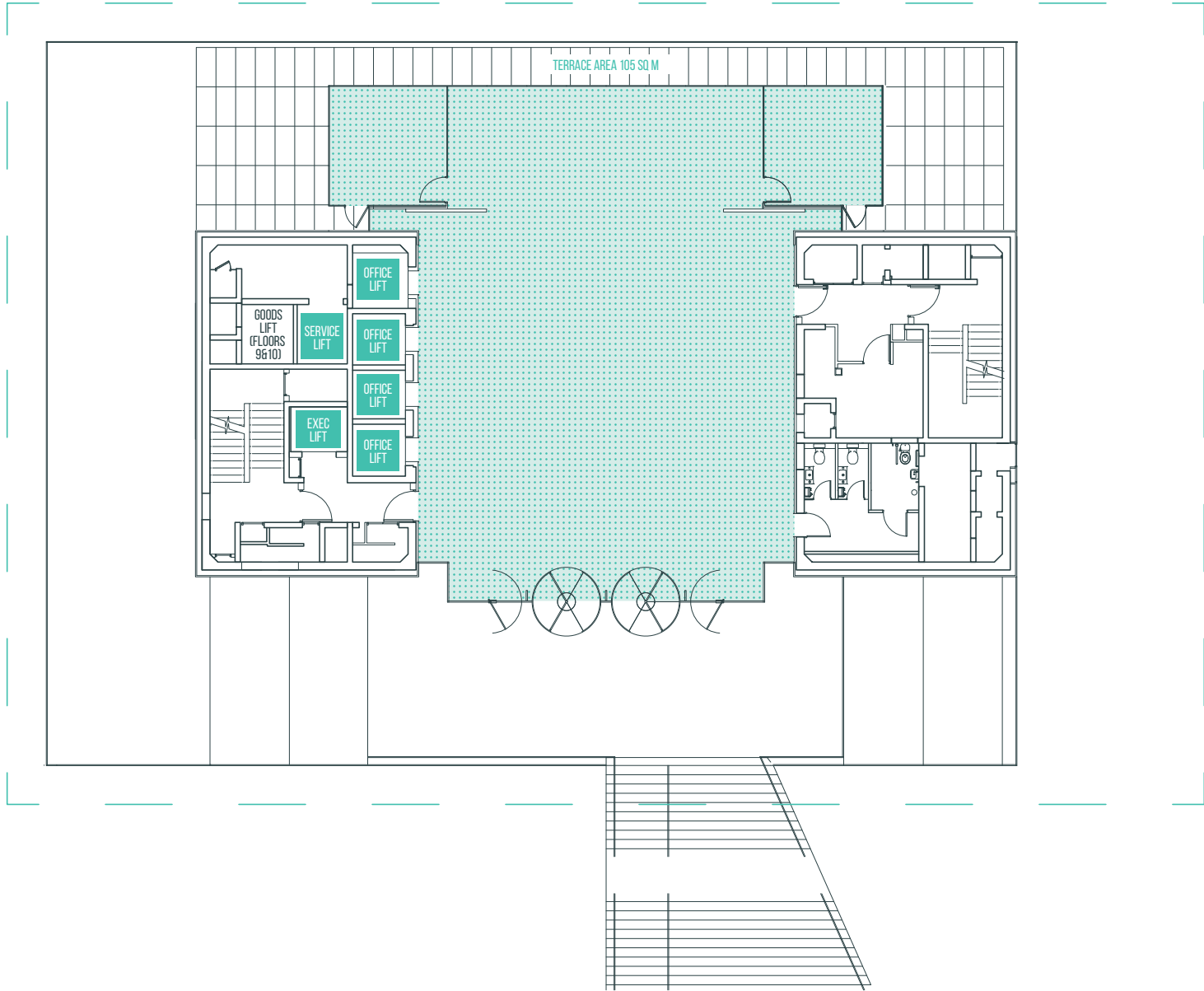
Office Areas (NIA)	SQ FT	SQ.M
Level 8	9,914	921
Level 7	9,914	921
Level 6	9,914	921
Level 5	9,914	921
Level 4	9,914	921
Level 3	9,914	921
Level 2	9,914	921
Mezzanine	377	35
Reception	3,326	309
Total	73,101	6,791



# RECEPTION

3,326 sq ft  
309 sq m

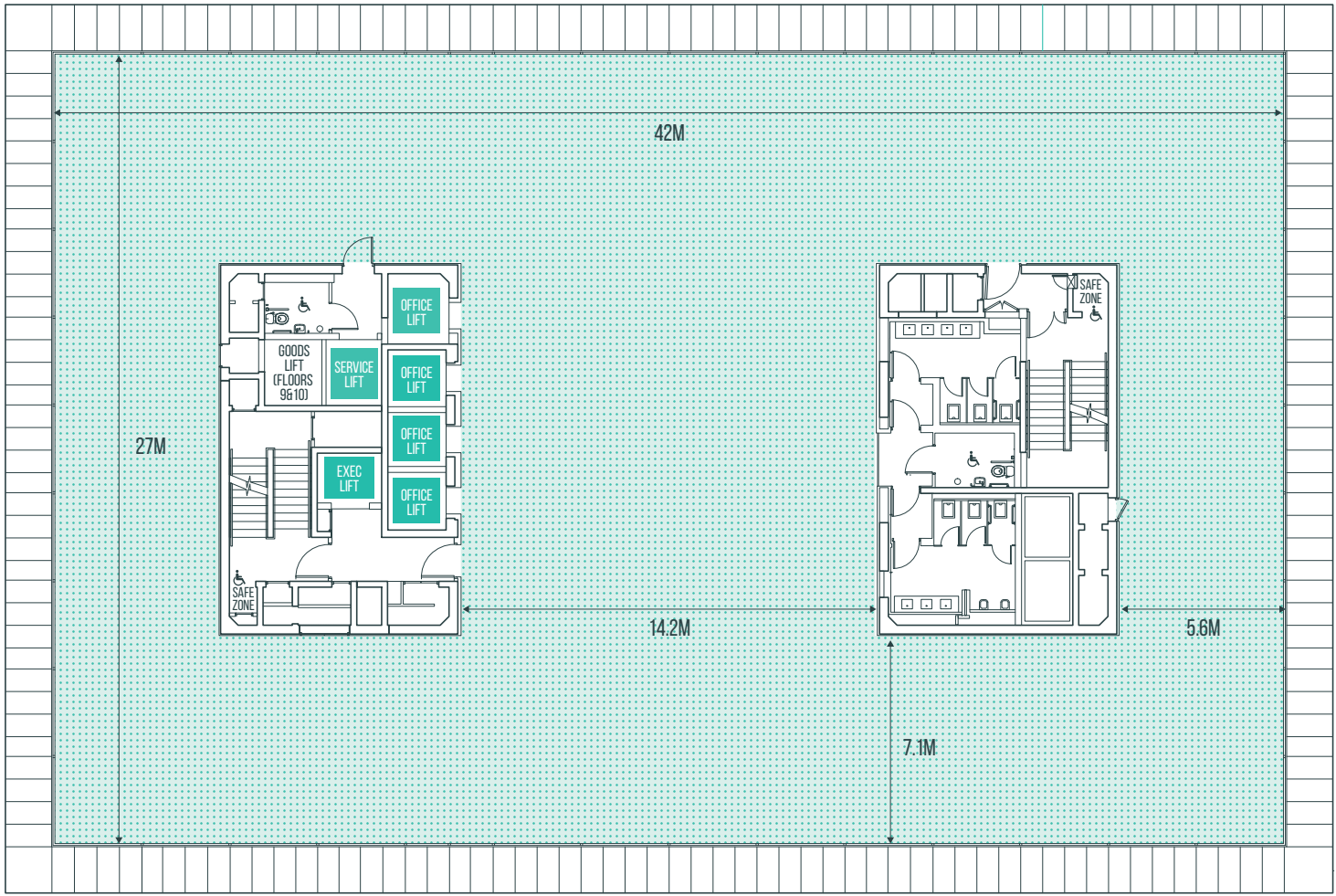
*\* Not to scale. For identification purposes only*  
*\* Sizes quoted are Net Internal Areas*



# TYPICAL FLOOR

9,914 sq ft  
921 sq m

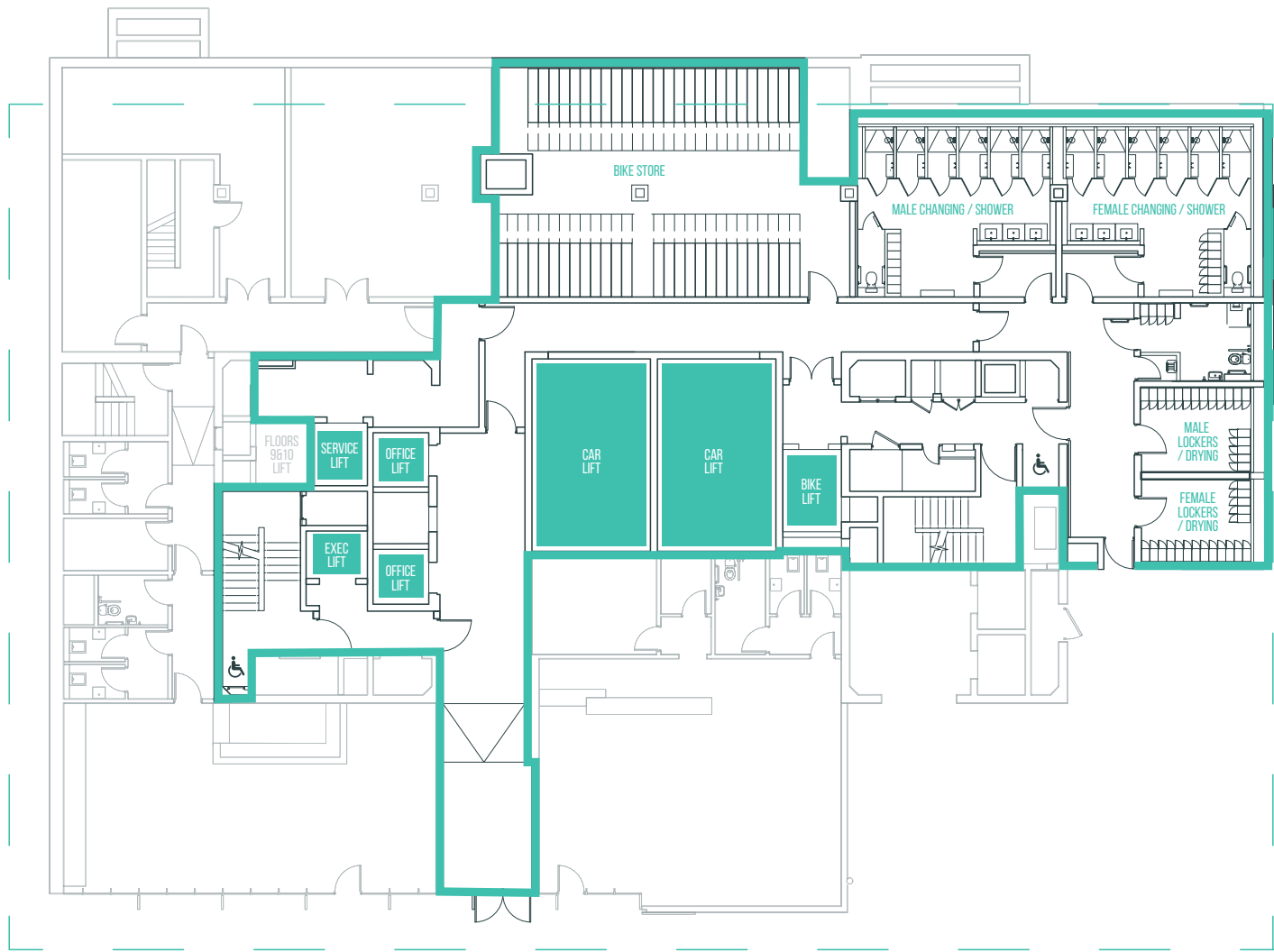
*\* Not to scale. For identification purposes only*  
*\* Sizes quoted are Net Internal Areas*



# BASEMENT -1

## Infrastructure

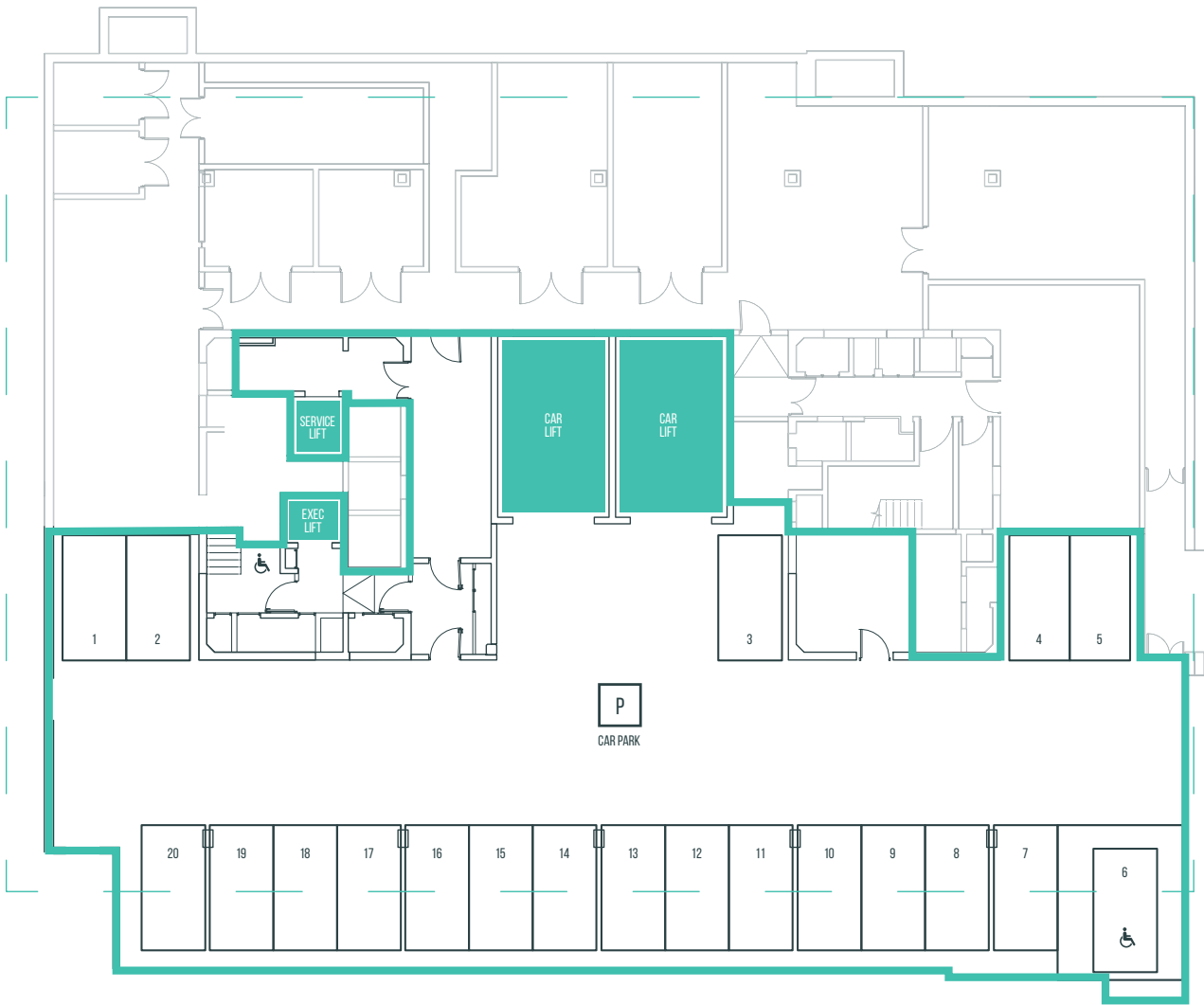
- Secure storage for 90 bicycles
- Exceptionally high quality male/female shower facilities
- Male/female drying rooms and lockers



# BASEMENT -2

## Infrastructure

- 20 car parking spaces (accessed via car lift)
- Dedicated Executive Lift from car park to office floors



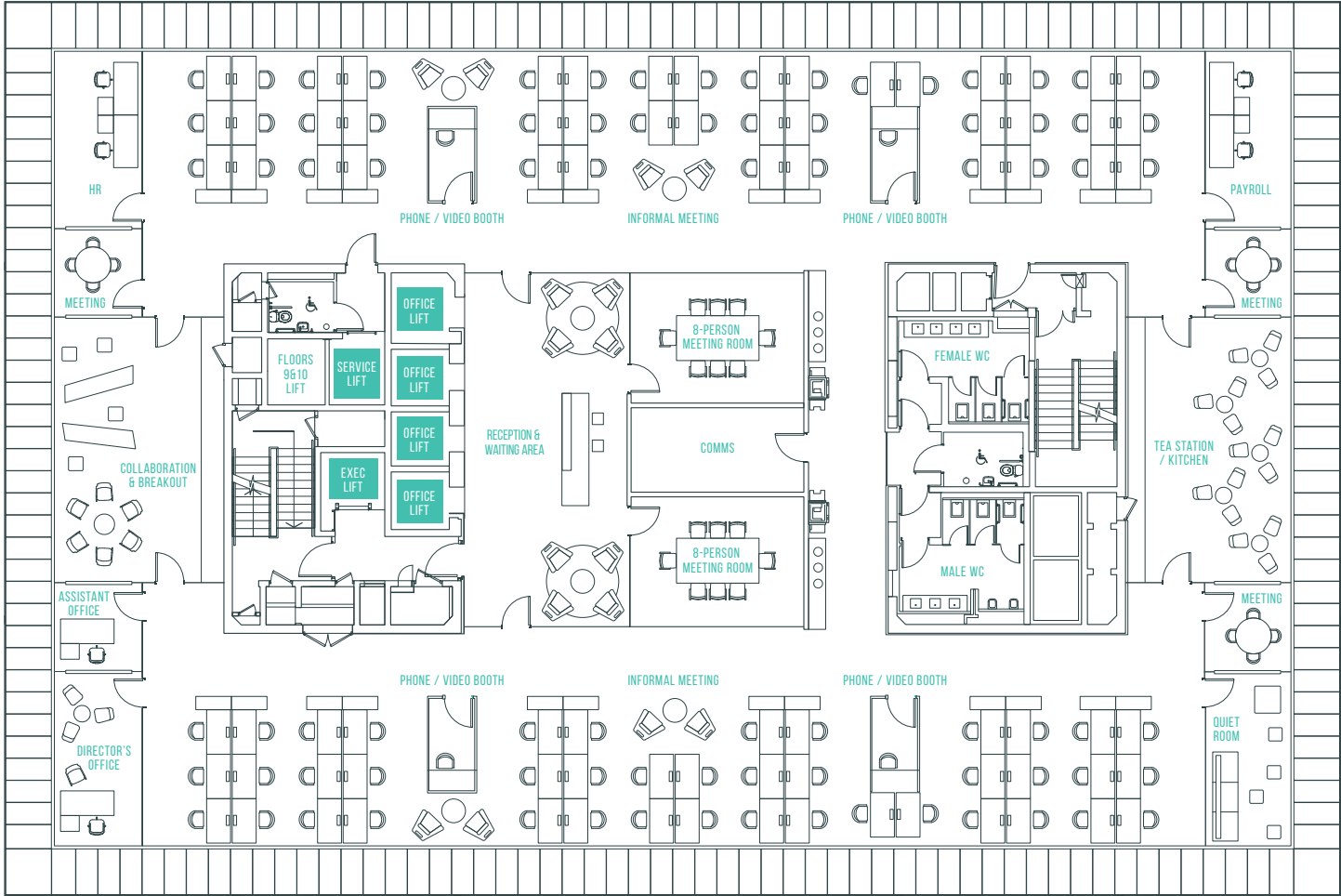


# TECH LAYOUT

## Infrastructure

### 1:10 Occupancy Ratio

86	Workstations	1	Breakout/collaboration areas
1	Director's office	3	Informal meeting areas
1	Assistant office	1	Quiet room
2	Double cellular offices	1	Reception & waiting area
2	8-Person meeting rooms	2	Docu-hubs
3	4-Person meeting rooms	1	Tea station / kitchen
4	Video/phone booths	1	Comms room

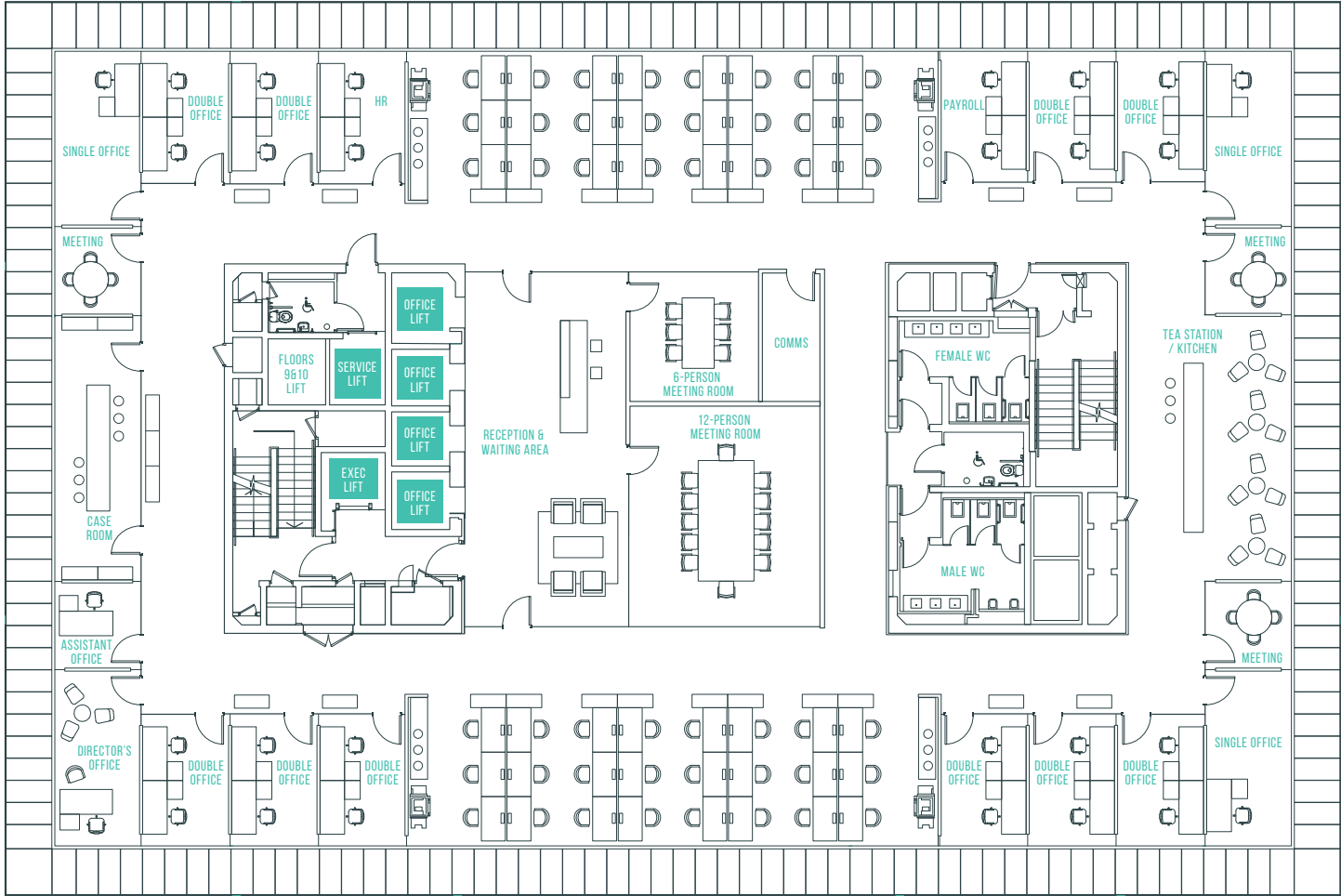


# PROFESSIONAL LAYOUT

## Infrastructure

### 1:12 Occupancy Ratio

48	Workstations	3	4-Person meeting rooms
1	Director's office	1	Case room
1	Assistant office	1	Reception & waiting area
12	Double cellular offices	4	Docu-hubs
3	Single cellular offices	1	Tea station / kitchen
1	12-Person boardroom	1	Comms room
1	6-Person meeting rooms		



# FINANCIAL LAYOUT

## Infrastructure

### 1:8 Occupancy Ratio

110	Workstations	2	6-Person meeting rooms
1	Director's office	2	Video/phone booths
1	Assistant office	1	Informal meeting area
2	Double cellular offices	1	Reception & waiting area
1	60-Person briefing room	2	Docu-hubs
1	12-Person boardroom	1	Tea station / kitchen
1	8-Person meeting room	1	Comms room

